

MULTI-SHOTSOUND™ RELEASE

Retro Fit Instructions (Older Zinger Wingers)

Each Retrofit kit includes:

- (1) Multi-ShotSound™ Release (complete with servo)
- (2) 2" machine screws
- (2) 3/8" locking nuts
- (2) Red wire connectors for servo
- (20) Spacer washers
- (1) Paper template and instructions
- (1) Pouch release bolt with locking nut
- (1) Electrical wiring diagram

Tools you may need:

- Pliers with wire cutters
- Phillips screwdrivers
- Slot screwdriver
- 3/8" wrench
- 7/16" wrench
- Vise grips
- Masking tape
- Lighter
- Drill
- 1/4" drill bit
- Center punch (pointed nail will do)

1. Cut off the old pull cord wire as it projects from the frame.
2. Remove and save the four 2" machine screws (one at the four corners) holding the aluminum nuts
3. As plates come apart from the winger's main body frame disconnect the wire lead connecting the solenoid.
4. Remove all old release components (nuts, bolts, trigger, solenoid, etc) from the plates.
5. Set the two aluminum plates in front of you and mark the center point along the top edge (longer side). Tape the template over the edge (crease the line along the template to properly position the template).
6. Using a center punch (a pointed nail will do) mark the position of the two 1/4" holes that will secure the new release.
7. Drill the 1/4" holes thru the top and bottom plate making sure they are in the same position.
8. Before proceeding to reassemble the base ensure you have enough projecting wire (4"- 6") to connect the new release. You may want to install a new wiring harness before proceeding.
9. At this point you will assemble the two plates and only then will you position the new release into place. Using 5 washers under each bottom plate (see diagram B) reassemble the plates to the main frame. Lightly tighten the lock nuts.
10. Slide the new Multi-ShotSound™ release into position (you may need to pry the plates apart with a screwdriver to allow the new release to slide into position), and connect the terminals to the servo (See wiring diagram). Before mounting the release test your electronics to determine if the new release is receiving any power. If you do not have any response at the new release you will need to troubleshoot the wiring harness or the electronics.
11. If all is well proceed to position and mount the new release with the 2" machine screws and lock nuts. Finish by tightening down the four plates screws.
12. Replace the pouch release bolt with the newer eyebolt.

DIAGRAMS

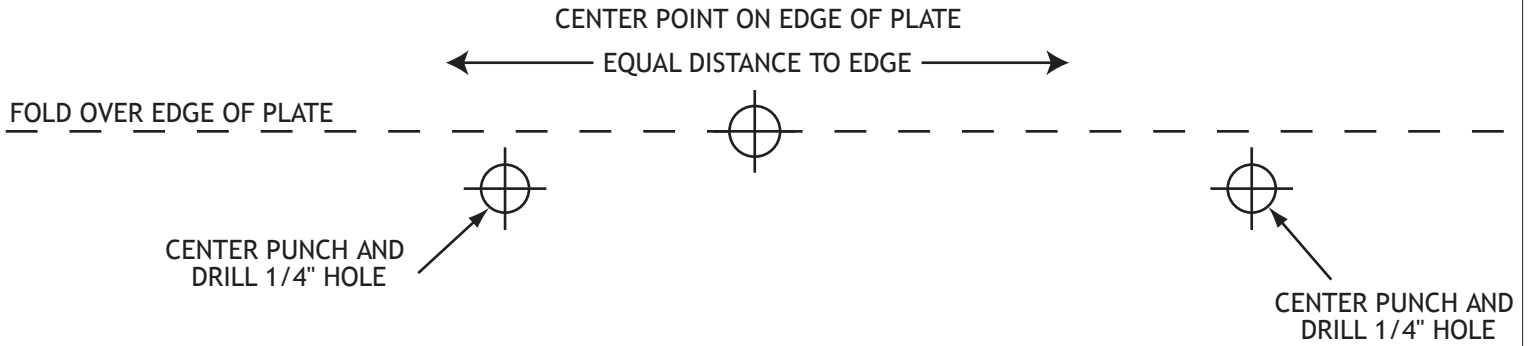


DIAGRAM A

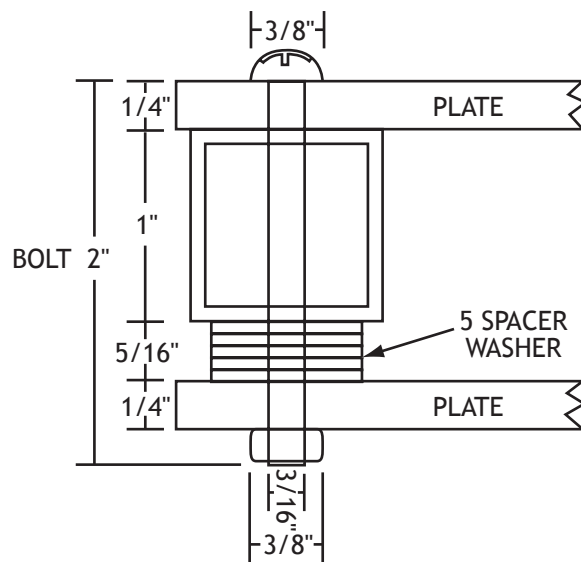


DIAGRAM B

NOTE: AFTER HOLES HAVE BEEN DRILLED IN BOTH PLATES, ASSEMBLY SHOULD LOOK LIKE DIAGRAM B

CONVERTING MANUAL RELEASE TO REMOTE RELEASE

Retro Fit Instructions

1. Begin by removing the old manual release by unscrewing and saving the 2 bolts and nuts (G3 Series); 4 "phillips head" machine screws(G4 Series) that hold the release mechanism in place.
2. (For G3 Series only) - Two new 1/4" mounting holes may need to be drilled directly above the originals. For exact positioning place the paper emplate over the housing, align the markings to the original mounting holes and mark the position of new holes.
3. Fish the new wiring harness down thru the aluminum tubing. Use the third hole from the top (left hand frame). The end of the wire will need to be fished thru a hole about 2-3 inches from the bottom. One trick to doing this is to let the wire drop right thru the end and then loop it back and fish it up from the bottom.
4. Strip approximately 1/2" of the wires plastic casing and crimp each female bullet connector to the wire end.
5. Position new release into place and finger tighten machine screws a few turns each. Do not tighten at this time.
6. **IMPORTANT:** Before permanently joining the connectors together and reinstalling the release you **MUST** determine the polarity of the wires and join them accordingly. This is accomplished by lightly connecting the bullet connectors together and testing the release with your electronics to activate the servo. Dogtra and Tritronics remote controls work opposite each other so if you connect the wires one way and they "close the trigger" you then must flip the bullet connections around in order to "open the trigger". There are only two options here. Once you have determined the correct setup press the connectors firmly together and reinstall the release mechanism. No other modifications are required.
7. Tighten down all 4 machine screws. Tuck any loose wires inside of the shield of the release.
8. If using Dogtra electronics attach the mounting plate to the receiver and install the button snaps into the female snaps. These will line up with the holes drilled on your Zinger Winger. If there is a strip of velcro type "Receiverlok" material between the 2 mounting holes you will need to strip this off in order to use the mounting plate. NOTE: You can also order a pack of matching "Receiverlok" to use with this existing mounting material.

